

imagingworkstation

The Imaging Workstation was designed for pavement surface analysis using digital image data collected by ICC Imaging Vehicles. The software was designed to expedite the distress rating process and to manage and maintain rating data. The Imaging Workstation allows users to synchronize images from multiple cameras. The application has tools to assist in distress analysis and measurement. Users can categorize, rate, measure and save all pavement distress information. Distress information can then be printed or exported in several formats. The Imaging Workstation is network compatible allowing multiple users to access data from a server and perform ratings.

Up to three full-size images can be viewed on side-by-side video monitors.

The camera synchronization function provides matching views of all camera images.

Users can classify, rate, measure and save all pavement distress information. The location of each distress is saved in a database and appears with each image.

The application was designed with Microsoft technology using a Microsoft SQL 7.0 databases. The application was also designed to work with Adobe Photoshop 6.0 for special image processing.

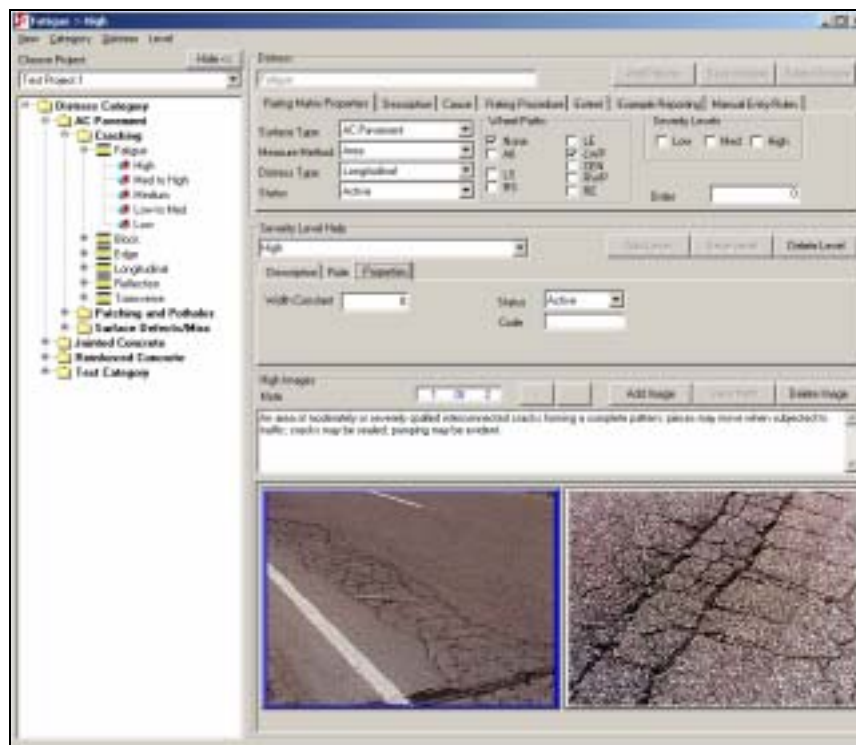
The Distress Manager screen acts as a help file definition that exemplifies and explains the different distresses that can occur on a road surface.

Users can enter the distress manager, select a road surface type, select a severity level, and view an image that exemplifies the distress.

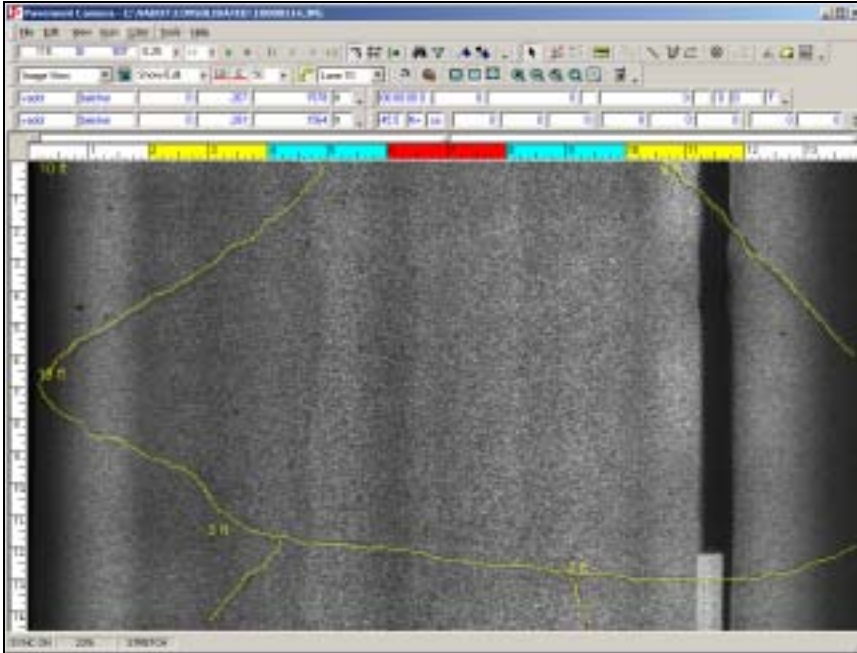
The Distress Manager allows users to create a multitude of categories using any combinations of crack type, location, severity, crack width, and method of measurement. Users may create any number of new distress categories with any combination of variables. The Distress Manager can be customized for different projects. Distresses can be assigned severity levels. The Imaging Workstation comes with a baseline Distress System which can be customized.

The Camera window displays the images and data collected by a single camera on the collection vehicle.

Distress Manager



Pavement Image with Distress Annotations



Rating Manager

The Imaging Workstation software separates the crack detection process and the rating process into separate modules. With this concept, changes can be made to crack data without affecting other modules in the application. The Imaging Workstation software can accommodate a wide array of rating requirements and definitions. The Distress Rating screen displays all distress rating information under the two rating tabs. Once a distress is cataloged in the database, you can click on it and it will take you to that image.

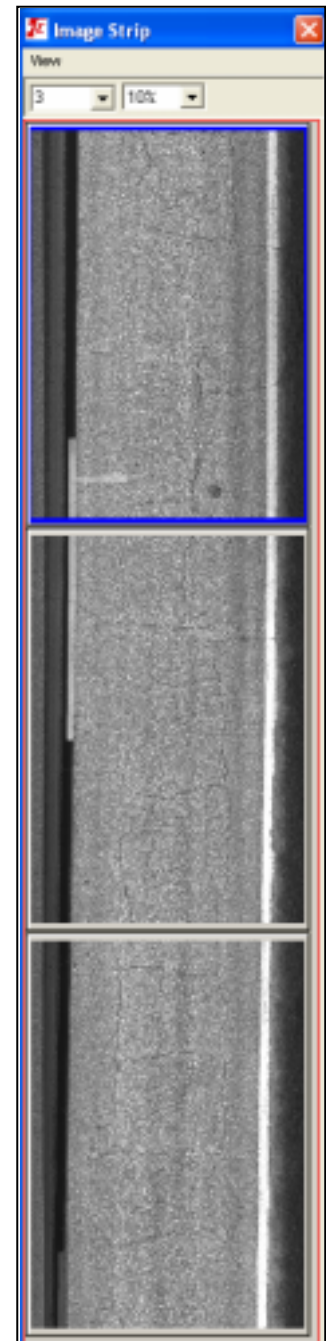
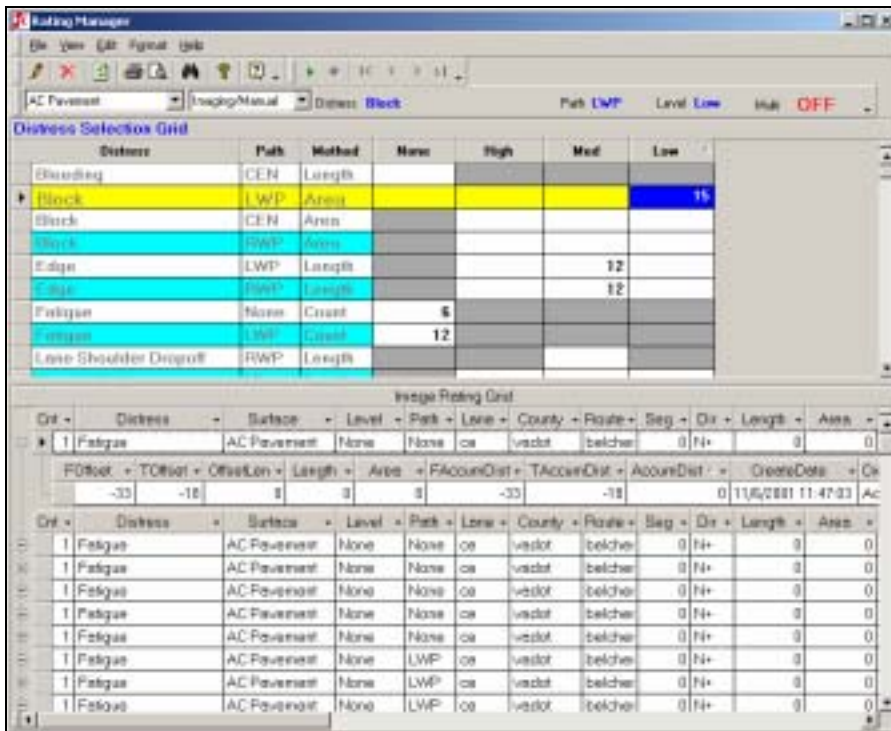


Image Strip

The image strip screen allows you to view multiple consecutive images from a camera. Each camera can have its own thumbnail image strip. Image size and the number of images on the image strip can be adjusted from the drop down menus located at the top of the window.

