

WinPRO

ICC's new WinPRO is the NEXT GENERATION of data collection and reporting software that revolutionizes the way data is collected, processed, and viewed.

The WinPRO application is a database driven Windows program that enables the user to collect, store, process and graph data from a single Windows application. The program is designed to make road profiling so easy that a person with minimal training and experience can operate the system. The program manages data files, builds, saves and utilizes custom processing templates for real time viewing and data reports. It has built-in diagnostics with screens for checking and calibrating the profiler's measurement sensors. These screens have step-by-step instructions for operation and walk the user through these processes. All calibrations, once accepted, can be logged or sent to a printer.

When the user starts the program they can choose between performing sensor checks, calibrating the distance, using the run manager or creating report templates. The operator uses the report template button to build or choose a previously customized template. These templates control what data will be displayed in real time and define the values of any parameters or filters for which the data will be processed and reported. Once the desired roughness indices and processing parameters are selected the operator saves the entries as a template. The template is saved and can be modified at any point in time. The system allows the user to create and store an unlimited number of templates. All processing templates are displayed under a tab in the "Run Screen". They are available for selection on a new or previously collected data run. An added benefit to our system is that an administrator can create templates with specific settings that meet job requirements. When a field operator selects the template the system

automatically uses the proper processing parameters for the job.

To view previously collected data or create a new run the operator simply clicks on the Run Manager button. The program displays any collected runs that are saved on the system in the database. The operator either selects an existing run or chooses a new run. If a previously collected run is chosen the system displays the data in graphical and report format with its respective template. The user can print out the information and create ASCII text, ERD or Excel output files. The operator has the ability to change any parameters in the processing template and the system automatically updates the graphical or informational reports on the screen. The operator can truly interact with data files and create any custom output required in seconds.

Before a new run is started the operator chooses real time and post processing templates. The system will graphically display in real time the chosen information in the template (i.e. PI simulation, IRI or profile). When the run is stopped all data and reports are automatically generated and displayed on the screen for the operator to scroll through. The user can then print the graphs and reports, save the run as a data set with its template settings, modify its template settings and automatically update the data on the screen or save it to media for future use. The operator may even choose not to save the data and reset the system for a new run. The operator has instant, real time access to the data and extreme flexibility for processing and reporting. ICC's next generation software is the ultimate tool for data management, collection, processing and reporting.



**Collect Data in Windows, Interact with Reports,
and View Graphs and Data in Real-Time**



INTERNATIONAL CYBERNETICS CORPORATION

P.O. Box 17246 • Clearwater, FL 33762 • Phone 727.547.0696 • Fax 727.546.8633 • Web www.internationalcybernetics.com

Features

Interface Features

- Customizable Reporting allows the user to change the standard report to meet user requirements
- System can be customized to meet the exact requirements of the user

System Calibration Features

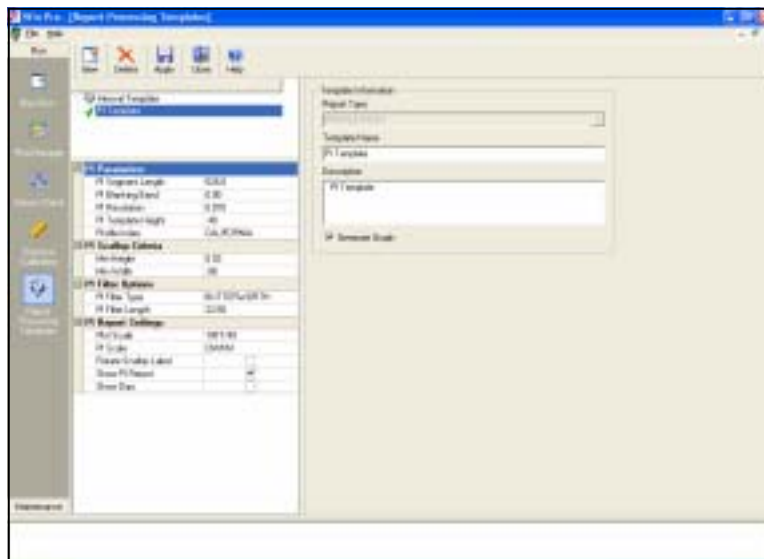
- System guided sensor block check (automatically guides user through series of configurable block checks simultaneously checking for sensor problems)
- System instructed Run Mode Static and Bounce Test (guides users through static and bounce test from the run mode screen while checking for sensor problems)

Data Collection Features

- Real-time output of *speed, location, station, distance, IRI, AVG IRI, PI, Ride Number, and Texture*
- Marking Mode allows user to use vehicle as a ruler. The user can drive from the starting point of a run to a specific location on the road. The vehicle position will be displayed in the real-time graph.
- Calibration Mode - This mode is a special stationary run mode during which users can be guided through a static and bounce test.
- Eventing- Events are used for reporting purposes and define how the data will be processed. Users can label, section, re-reference, include or exclude data, and/or indicate the start and end of a run while collecting data. Events can be entered via mouse, touch screen, keyboard, or custom event board.

Graphing and Reporting Features

- Graphs viewed in real-time—include Raw Sensor, Filtered Profile Trace, Moving Avg IRI, and Profilograph Simulation
- Immediate data results for on-screen analysis of reports and graphs (After a run is completed, the system will use those options to process the data and display a graph and report in an Excel style table.
- Multi Wheel Path Graphing and Reports
- On screen viewing of all reports and graphs which can then be sent to the printer or saved in several file formats for delivery via e-mail or disk.



**Create Multiple Custom Report Templates to
Fit Specific Job Requirements**



INTERNATIONAL CYBERNETICS CORPORATION

P.O. Box 17246 • Clearwater, FL 33762 • Phone 727.547.0696 • Fax 727.546.8633 • Web www.internationalcybernetics.com